

## ***WHAT'S BEEN***

### **April Fool's Tour 1st-3rd April 2011**

***Three April Fools on Tour*** (See May newsletter)



Do you think Shrek looks nervous?  
This was not long before he died!

Thanks to, Lindsay Purvis

### **29<sup>th</sup> May Drive to Tapawera**

A most enjoyable day out, the weather was perfect for top down driving and the roads and company were both excellent. Twenty cars participated and most completed the full day. One or two turned for home after lunch at Tapawera but they missed some scenic driving and an enjoyable natter at the Riwaka Hotel.



*Part of the fleet, ready to leave for Tapawera*

## **Drive to Havelock 19<sup>th</sup> June**

A large contingent of cars left Nelson in less than ideal driving conditions heading to meet an even larger group from Blenheim. The 70 people dining enjoyed a very good and reasonably priced lunch at the Slip Inn Restaurant. After the meal and a lot of talking we all made our own way home.

Seventy people means approximately 35 cars, so this was a very popular concept. Perhaps we should do this type of run more often? Any suggestions where else we could go please contact the editor Bruce Welsford 03 544 6818 or [sota@slingshot.co.nz](mailto:sota@slingshot.co.nz)

## **Mid Winter Dinner 9<sup>th</sup> July**

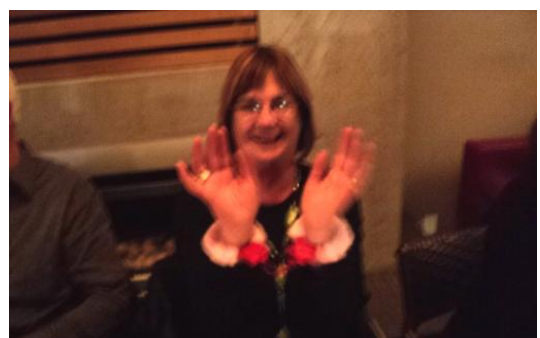
A very enjoyable evening was had by all 40 members who attended. The food was excellent, the drinks were flowing, and a visit by Santa bearing "sensible" gifts for everyone was the highlight of the evening. The venue proved to be very suitable, being filled to capacity. and judging by the noise everyone had a great time. Thanks to Mr & Mrs Claus for organising this event.



**Celebrating the mid winter Christmas Dinner.**

TOP. Squeezed into the venue.

Bottom. Celebrating with the gifts



Thank You kind Santa, now what can I do with these?



# ***WHAT'S COMING***

## **Drive to Lake Rotoitoi July 24<sup>th</sup>**

Leaving N.M.I.T. Queen Street at 11.00 am to again meet with the team from Blenheim. Please bring your own lunch.

## **Drive to Renwick August 14<sup>th</sup> August**

The vintage car club are having a "Sporting Trial" over steep and slippery farm tracks, and through other difficult courses. Although we will not be participating it should be a very interesting days outing. Departing Q.E.2 drive at 10.30am. The afternoon session starts at 1.15pm. Probably there will be are no dining facilities, so remember to bring your own lunch.

**Directions to the venue coming from Nelson :** Before the Wairau Bridge turn right into Northbank Rd ; Left to follow Northbank Rd 20 km up the valley turn right into Fabian Valley Rd ; Take next right ; Right into paddock, park on flat near toilet block.

## **Alpine Classic 19<sup>th</sup> & 20<sup>th</sup> August**

Organised by the Canterbury branch of C.M.S.N.Z. Leaves from somewhere south of Christchurch, stays 2 nights at Oamaru then finishes somewhere south of Christchurch. Costs are \$275.00 or \$250 for members. Please contact Graeme Sharp, 021 395 944 or Stephanie Royds, 03 324 3202

## **Classic & Collectable Show Day 4th September**

Hosted by the Rover Car Club Nelson (Inc) at Higgins Park, Pigeon Valley Steam Museum, Wakefield. All Classic vehicles welcome with usually over 300 catered for. A \$5 entry per car with all occupants free. Morning and afternoon tea and a BBQ lunch available. Steam Museum rides, Transport Museum, Farming Museum, Saw Mill and of course many interesting vehicles. A great social meeting and a good time for the first run after the winter for many Classic Cars.

For more information please contact Chris Clark, Secretary/Treasurer/Editor Rover Car Club Nelson (inc) Phone 547 9363 Email [cgclark@ihug.co.nz](mailto:cgclark@ihug.co.nz)

## **Drive to Takaka 25<sup>th</sup> September**

Leaving from NMIT Queen street Richmond at 9.30 am. To visit Mrs Jill Quinn 97 Waitapu Road and view her late husbands collection of vintage cars etc. Please bring or buy your own lunch. Further information contact Geoff Morris 03 547 4494.

## **Car and Boat Show 12<sup>th</sup> & 13 November**

There is to be a car and boat show at Waikawa Marina on the 12<sup>th</sup> and 13<sup>th</sup> Nov. This is Christchurch show weekend so may be a chance for members to come over. There will be prizes as sponsorship has been arranged for the event. Something to think about and plan for.

\*\*\*\*\*

**The problem with being a parent, by the time you are experienced you are unemployed**



## CARS FOR SALE

For the dreamers amongst us here are a few "bargains".

### Found these on the internet

\*\*\*\*\*



**1963 Bentley S3 Continental**  
**£149,950 English Pounds**



**1936 Jaguar SS 2 1/2 L Sports**  
**£265,000 English Pounds**



**1961 Mercedes 300 SL Roadster**  
**£395,000 English Pounds**



**1927 Rolls Royce Phantom**  
**Price not listed**



**1953 Aston Martin DB2 / 4**  
**Allemano Coupe. No price**



**1929 Duesenberg Murphy J**  
**Convertible \$595,000 US**

---

Have something for the newsletter, or any suggestions?

Please contact the editor, Bruce Welsford 03 544 6818

or email [sota@slingshot.co.nz](mailto:sota@slingshot.co.nz)

\*\*\*\*\*

A father carries pictures where he used to carry money!

\*\*\*\*\*

**We are extremely grateful to "HAVEN REALTY" for donating the paper and photocopying the newsletters.**

